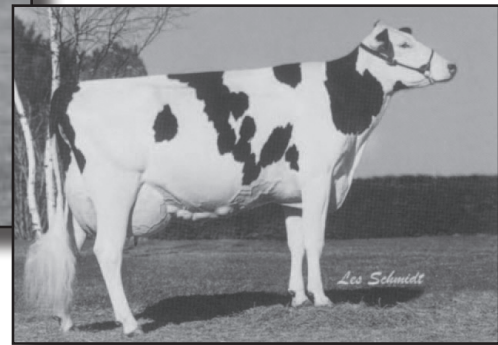




PINEHURST ROYAL ROSA
(2E-91 EX-MS)

**Maternal Sister to the Dam of Lot 5 &
3rd Dam of Lot 6**



PINEHURST ROYAL RHYME
(EX-91 EEEEE)
Dam of Lot 5

LOT 5 1ST CHOICE FEMALE

Matthew & Kevin Groff
16 Stoney Hill Rd.
Quarryville, PA 17566
717/305-0087

From 8 Pregs. Due September 3, 2009

PICSTON SHOTTLE-ET 598172GBR

EX-96-GBR GM GTPI +2269M
PTA +2165M +100F +63P 99%R 4/2009M
PTA +721NM +.08%F +4.0PL 2.66SCS 8%DCE
PTA +4.20T +3.31UDC +3.10FLC 99%R 4/2009M
#1 TPI Bull (4/2008, 8/2008, 1/2009 & 4/2009)

PINEHURST ROYAL RHYME 129626925

EX-91 EEEEE 4-08
3-07 3 365 40330 4.4 1782 3.2 1275
2-03 3 365 31050 4.0 1230 3.1 956
LIFE 1187 108930 4.3 4652 3.3 3584

Maternal Sister to Rhyme:

Pinehurst Royal Rosa-ET (2E-91 EX-MS)
3-10 3 365 41400 3.3 1358 2.8 1145
Both Rhyme & Rosa are 12th Generation Excellent!

CAROL PRELUDE MTOTO-ET

6001001962ITA TV TL
VG-1Y (ITA) GM GTPI +1641M
PTA +1061M +40F +21P 99%R 4/2009M
PTA +.99T +.80UDC +1.16FLC 99%R 4/2009M

CONDON AERO SHARON 5373153C

EX-91
4-00 2 305 35312 4.3 1518 3.4 1201
2-02 2 305 23327 3.8 886 3.3 770

COMESTAR LEE-ET 5757117C TV TL

CAN EX-Extra GM GTPI +1375M
PTA +159NM +.15%F +.04%P +2.3PL 7%US
PTA +1.97T +1.24UDC +1.57FLC 99%R 4/2009M

PINEHURST ROULADE 15229918

EX-92 EEEEE 2E 6-02
3-05 3 365 34160 4.3 1474 3.2 1091
5-00 3 365 35130 3.6 1271 3.2 1115
2-03 3 365 26430 3.9 1024 3.2 838
6-07 3 365 29010 3.5 1023 2.9 845
LIFE 1761 142070 3.8 5395 3.3 4705

3rd Dam: Pinehurst Sweet Cleo
(EX-90 EEVEV)

6-00 3 365 40380 4.4 1776 3.0 1228
LIFE 2173 191570 3.9 7392 3.1 5875

4th Dam: Pinehurst Sweet Freedom
(EX-90 EX-MS)

5-07 2 330 34520 4.3 1500 3.1 1084

5th Dam: Pinehurst Sweet Delight
(3E-91 GMD)

8-00 3 365 28460 4.2 1194
LIFE 2228 151600 4.0 6116 3.2 4907

6th Dam: Pinehurst Rapture (4E-96 GMD)

8-00 3 365 30368 4.2 1290
FIFE 2297 160790 3.9 6337

7th Dam: Pinehurst Fragrance (2E-90)

4-08 3 365 34490 3.6 1234

8th Dam: Hayssen Fond Ariel (2E-90)

8-00 2 328 23330 3.2 752

9th Dam: Hayssen D V Audrey (2E-90)

9-03 2 365 23670 4.4 1035

10th Dam: Whirlhill Q Rag Apple Ariel
(EX-92)

6-02 2 365 28755 4.2 1134

11th Dam: Arlite Posch (EX-92 GMD)

LIFE 3586 144739 4.7 5176

12th Dam: Audrey Posch (2E-93 GMD)

LIFE 3526 180339 5.0 6775