

The Portfolio of  
Antonio Banks



# Table of Contents

3.Eight Parallel Planes with Elements	
5.The Design of the Interrelationship of Non-Parallel Planes	Three
7.Collage: Promenade Architecturale	
9.Collage	
10.Cohabitation	
13.AutoCAD works	
14.Dimension Hatch	
15.Prop	
16.Polar	
17.Backgammon Board	

## Eight Parallel Planes with Elements



### Project Profile

A field,  $10\frac{1}{2}'' \times 10\frac{1}{2}''$ , is defined by eight parallel planes. (Each plane is parallel to every plane). Each plane is  $1\frac{1}{2}''$  high by  $10\frac{1}{2}''$  long. This field is also defined by two perimeter planes, which are perpendicular to the parallel planes.

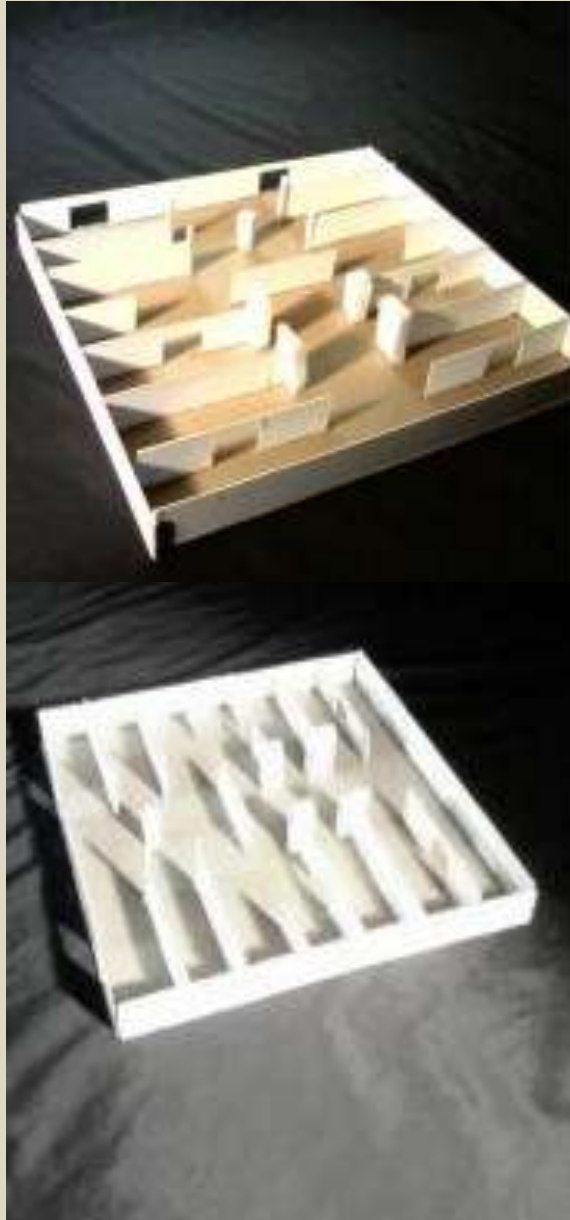
You will contrive a *simple, unobtrusive, neat* and *professional* method and placement for pinning the model to the wall in the designated location for the final presentation/review. Keep the parallel planes horizontal on wall surfaces.

1. Drawing of model
2. Preliminary model
3. Diagram showing the different spaces.
4. Final model
5. Final with elements

### Process

Each photo shows the process of the project. Showing hierarchy throughout the models. Within the field, design a spatial sequence, which includes all of the following elements arranged in any manner:

Photos of Final Model

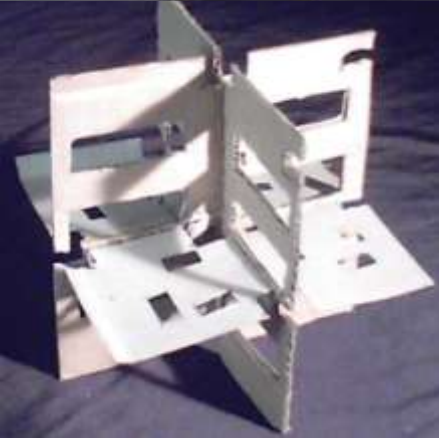


## The Design of The Interrelationship of three Non-Parallel Planes

### Project Profile

You will have three (3) planes, each with a maximum dimension of 8" and a minimum dimension of 1". The planes must engage one another so that the entire construction is orthogonally self-supporting. The entire construction must be contained within an imaginary 8" x 8" x 8" cube that is oriented to the X, Y, and Z axes.

In general terms your project should emphasize volition in decision making.



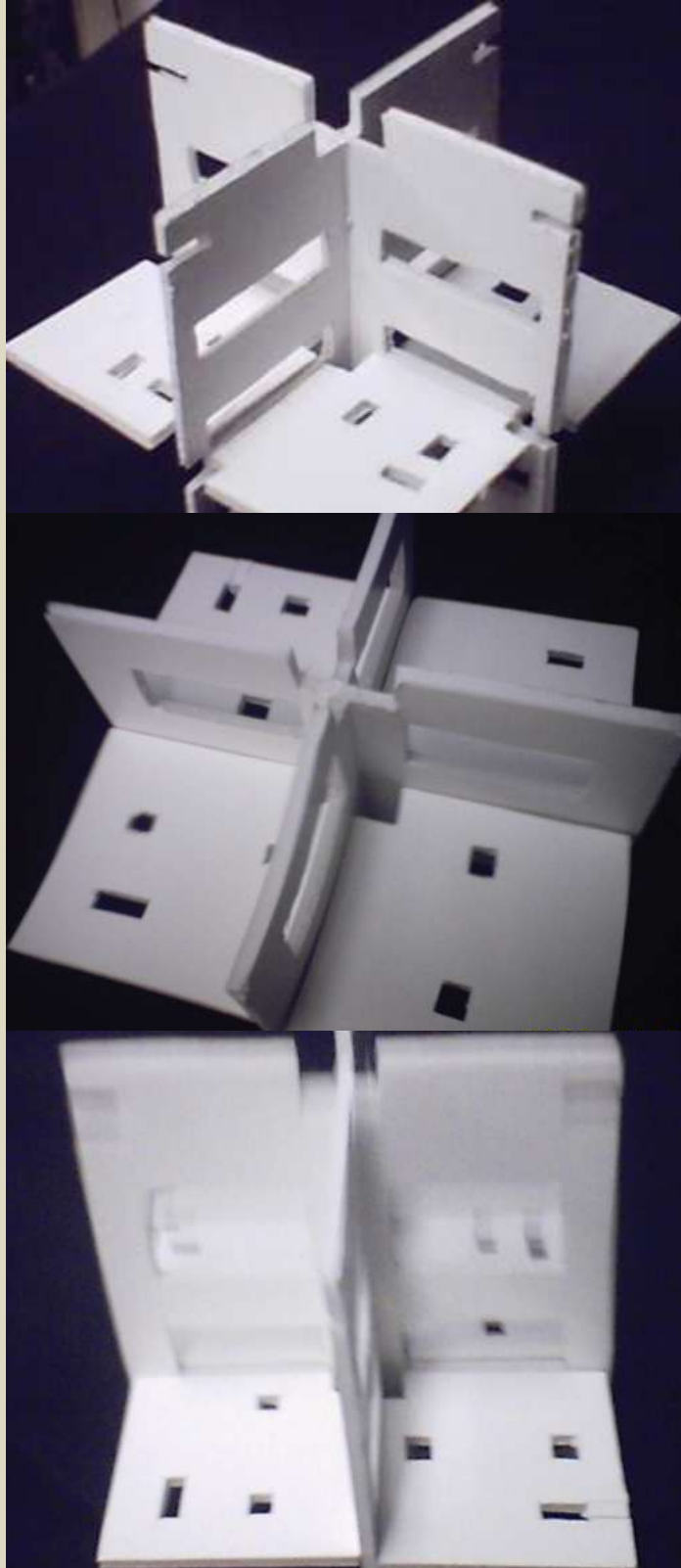
### Photos

1. Experimenting with shapes
2. Using the shapes and using them in space
3. Understanding the use of space
4. Using more shapes for a design
5. Final model

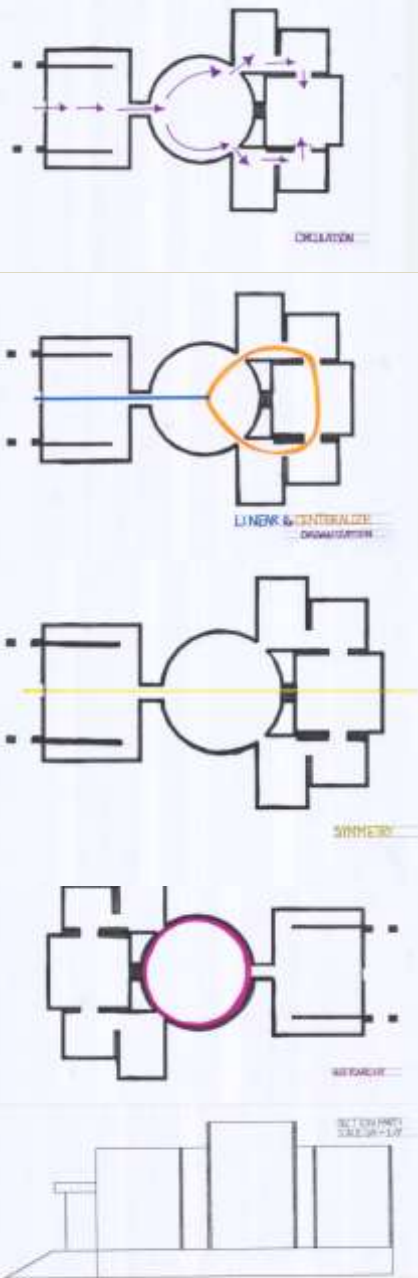
### Process

In this project I was able to come up with three different designs, each showing eight different points in which anyone can occupy.

Photos of Final Model



## College: Promenade Architecturale



### Project Profile

To understand the concept and composition of a room in terms of spatial definition, scale, and cohesion.

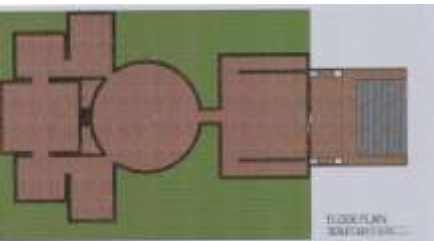
To recognize the three-dimensional properties of plan and section.

To understand the concept of scale and how scale helps to define architectural mood and effect.

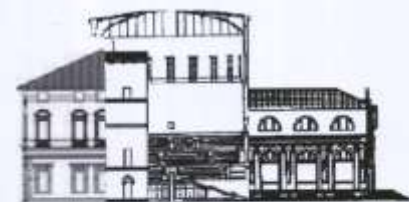
To understand the composition of a *promenade architecturale* (a carefully constructed sequence of spaces).

To understand the use of architectural precedent in design

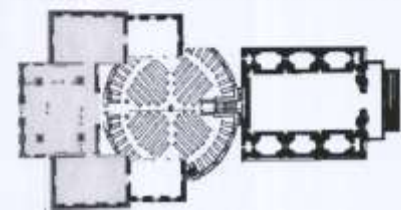
To synthesize an understanding of the elements of scale and proportion, light and color in creating a *promenade architecturale* that effectively conveys mood and effect.



### SECTION COLLAGE



### FLOOR PLAN COLLAGE



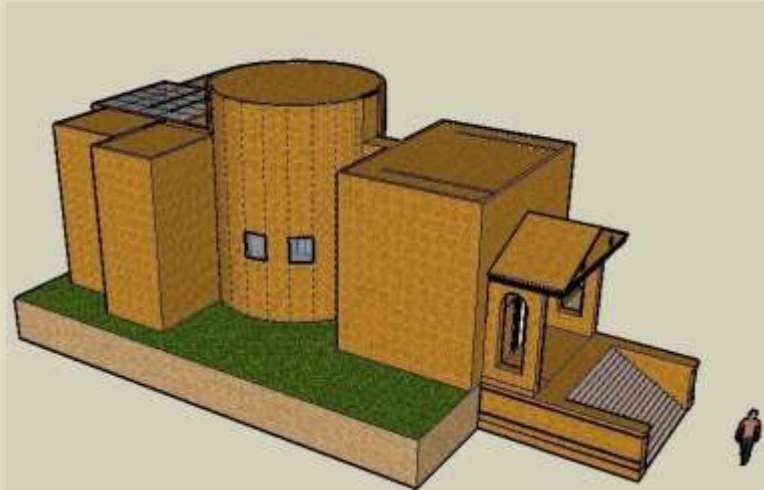
### Photos in order

1. Circulation
2. Linear Organization
3. Symmetry
4. Hierarchy
5. Section Part
6. Floor Plan
7. Section and floor plan collage.

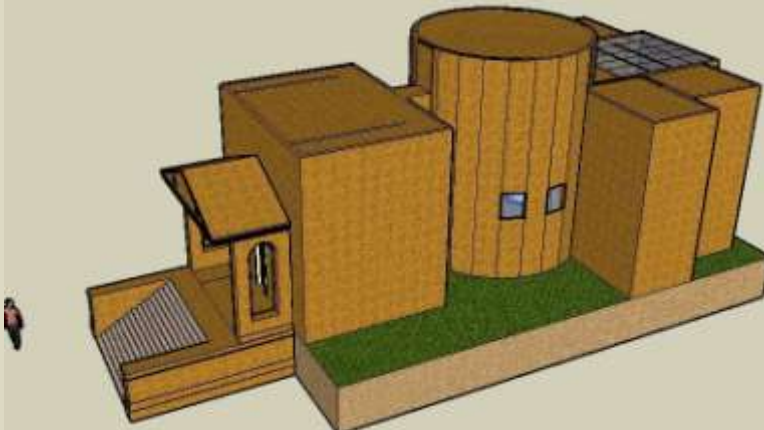
### Process

This was a group project which consisted two people choosing a few precedents and using a room inside or the entire building itself.

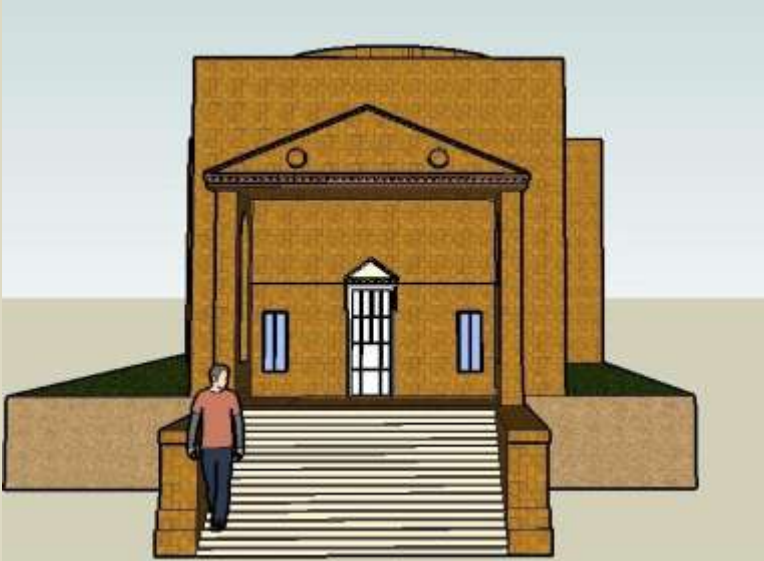
Final model I created from Google Sketch Up



West

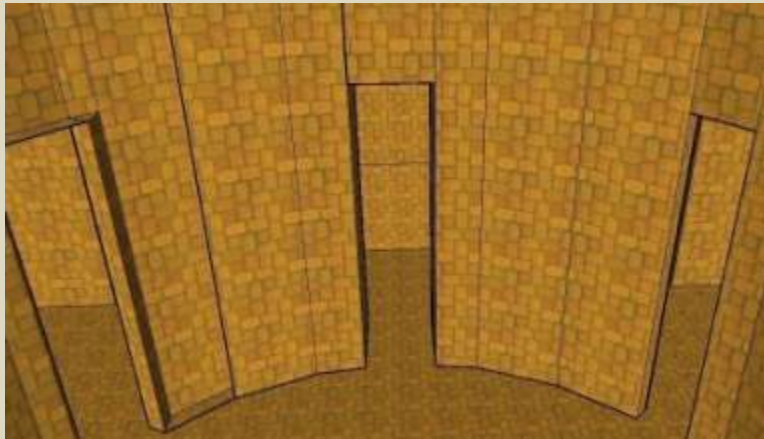


East

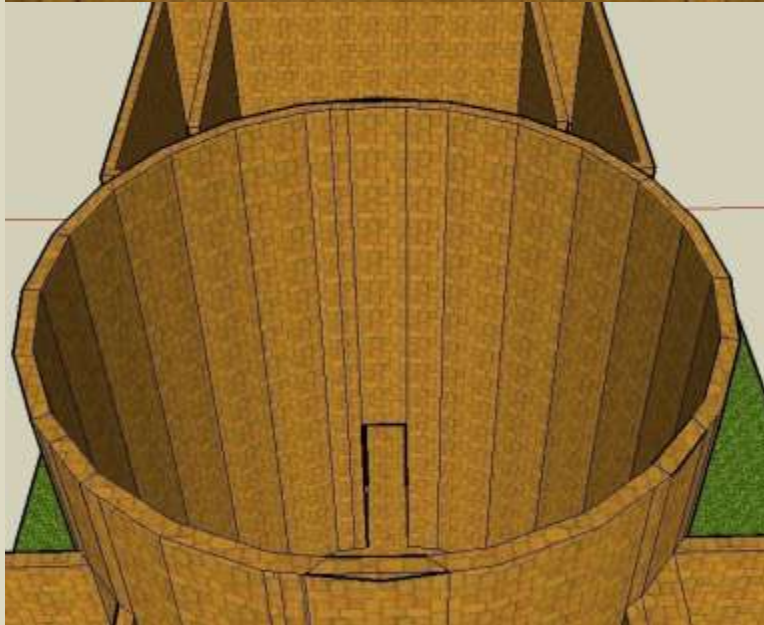


North

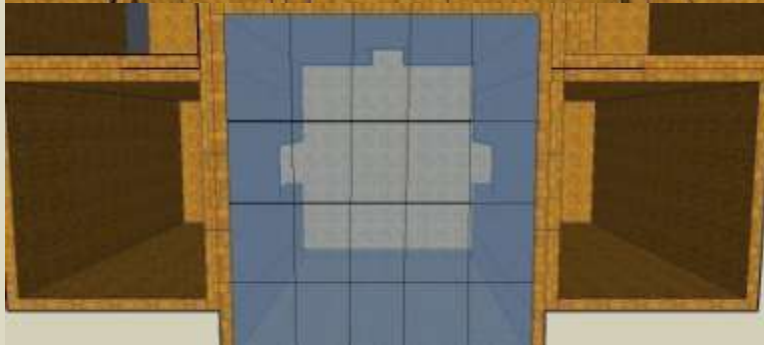
Interior photos of sketch up model  
Circle of Life



First Born  
Childhood

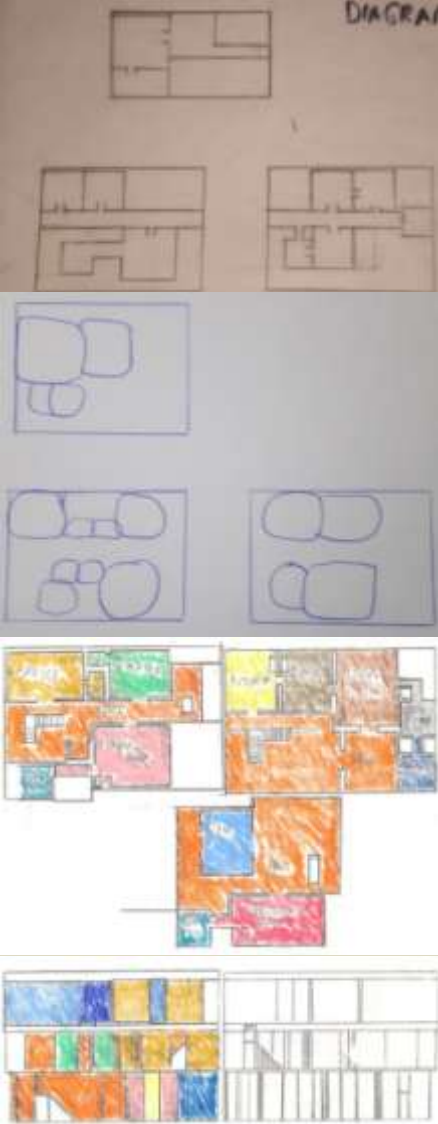


Adolescent  
Adult Years



Elderly Years  
Death

## Cohabitation



### Profile Project

To design an interesting, well conceived, and spatially satisfying townhouse for cohabitation. It then must be presented professionally. Cohabitation is a struggle between two people trying to have their individual spaces of the available property, while also sharing certain spaces of the available property. The focus of this project must be cooperation with and without compromise. This all must occur within a very limited site footprint.



### Photos

1. Block Diagrams
2. Bubble Diagrams
3. Plan Drawings
4. Section Drawings
5. Model showing spaces

### Process

This project was how to understand the meaning of cohabitation. We had to Create spaces that were for two people that were opposite, But still spent time with each other

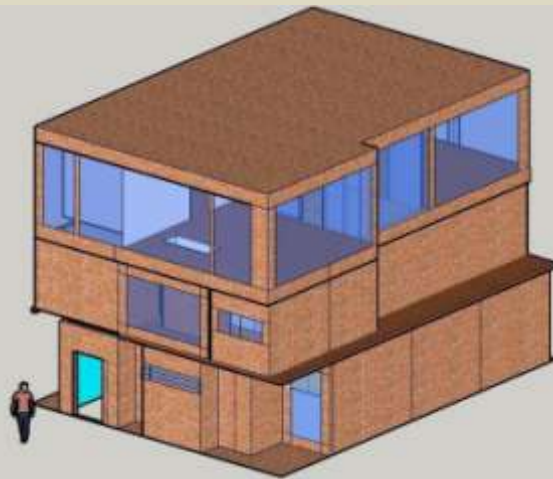
More Sketch Models



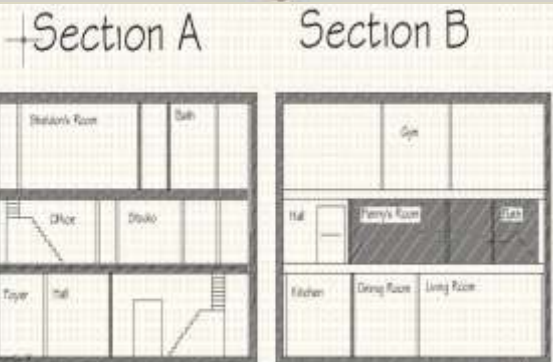
Final Model



Final model



First floor (left)  
Sketch up (right)  
model



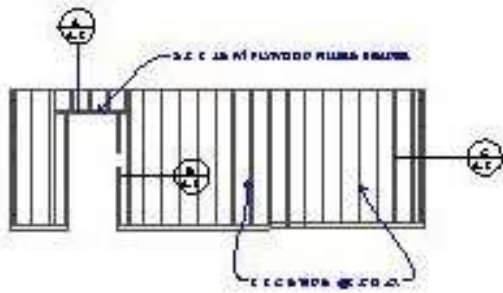
Second Floor (left)  
Floor plan (right)



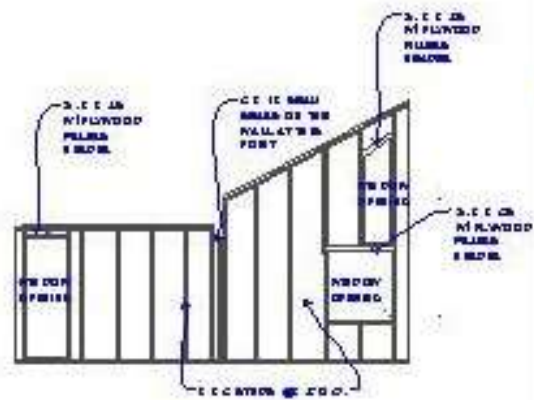
Third Floor (left)  
Section (right)

# AutoCAD Work

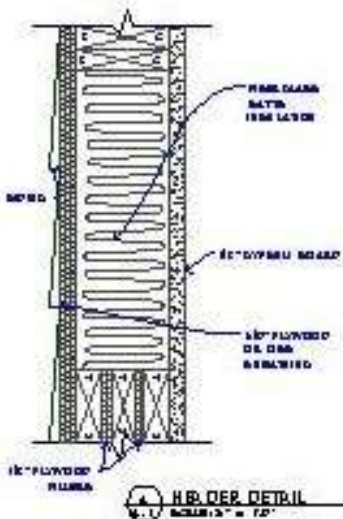
## Wall Framing



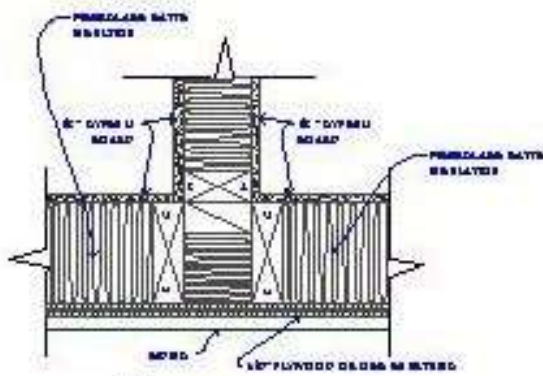
**EXTERIOR FRAMED WALL #1**  
SCALE: 1/2" = 1'-0"



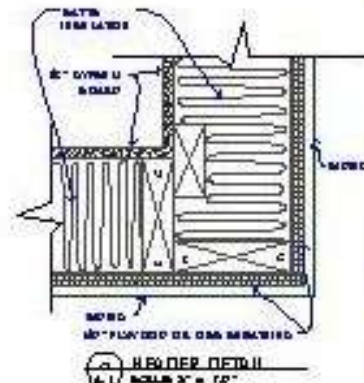
**EXTERIOR FRAMED WALL #2**  
SCALE: 1/2" = 1'-0"



**HEADER DETAIL**  
SCALE: 3/4" = 1'-0"



**HEADER DETAIL**  
SCALE: 3/4" = 1'-0"



**HEADER DETAIL**  
SCALE: 3/4" = 1'-0"



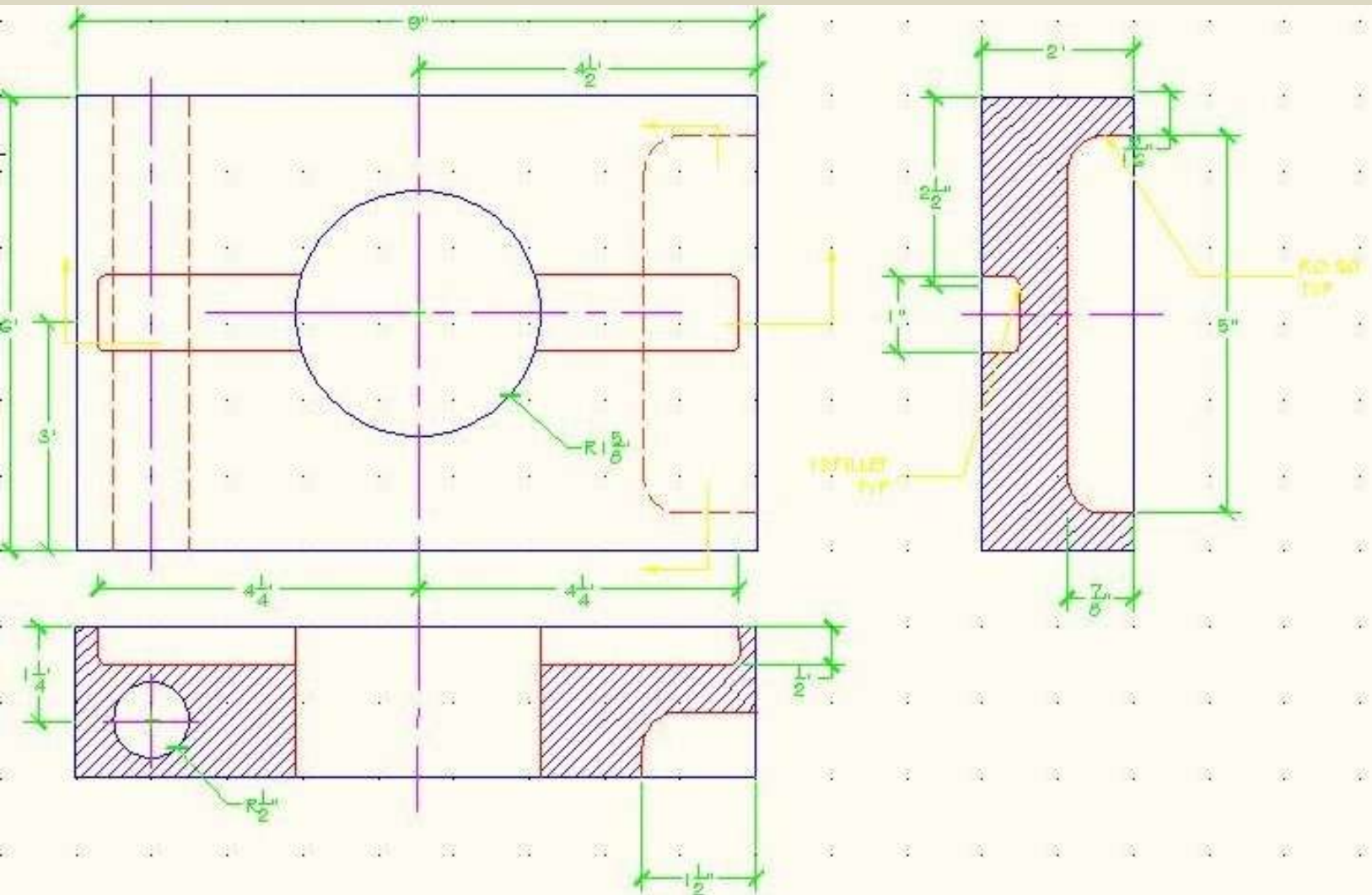
WOOD LAY UP  
FRAMED  
CONSTRUCTION

LAYER TYPE  
WALL FRAMING

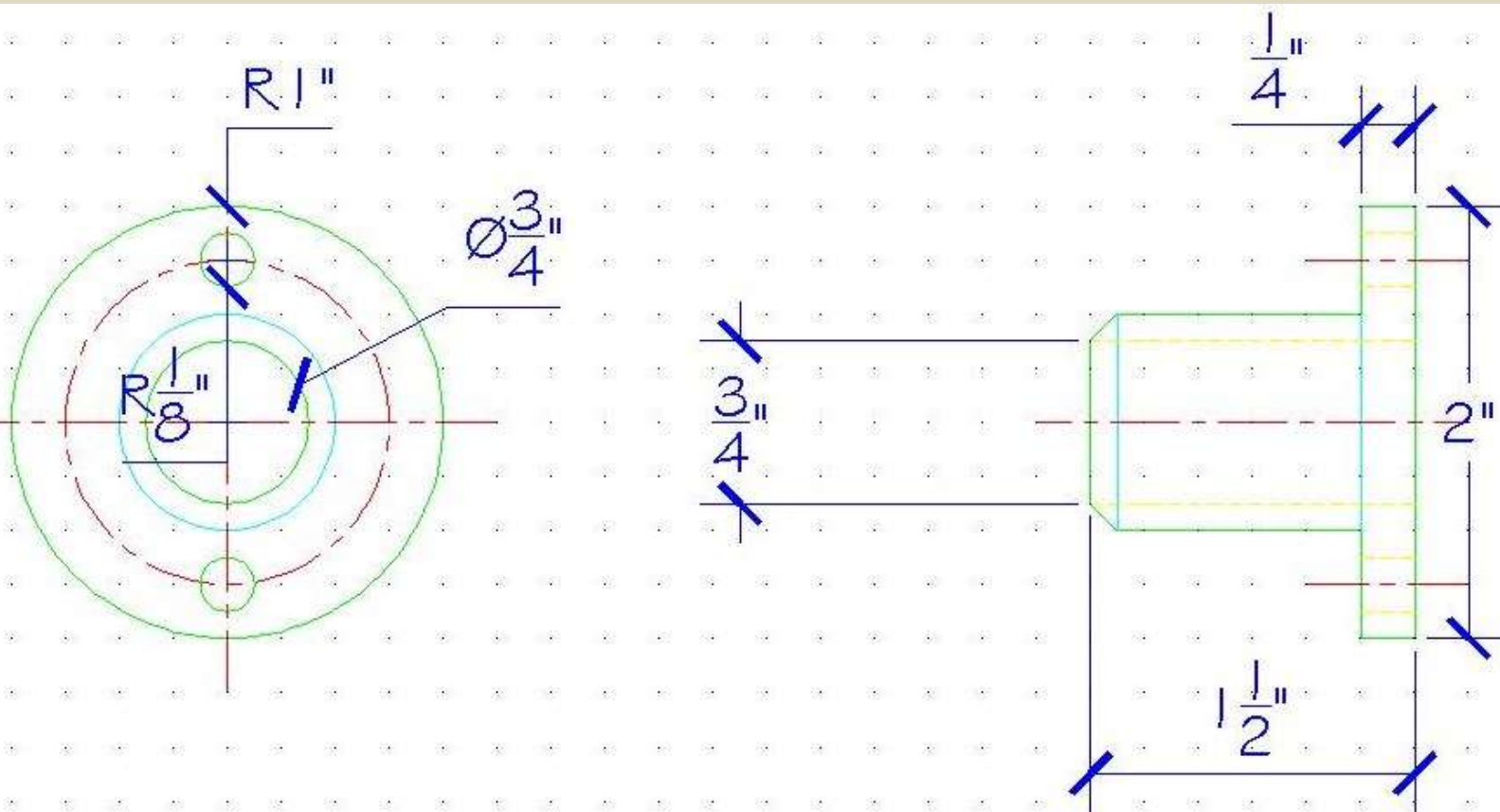
**ANTONIO BANKS**  
D.L. CHAMBERLAIN & ASSOCIATES  
ARCHITECTS  
1000 N. 10th St. Suite 100  
Tulsa, OK 74103

DATE	
BY	
APP'D	
CHECKED	
SCALE	
REV.	
R-1	

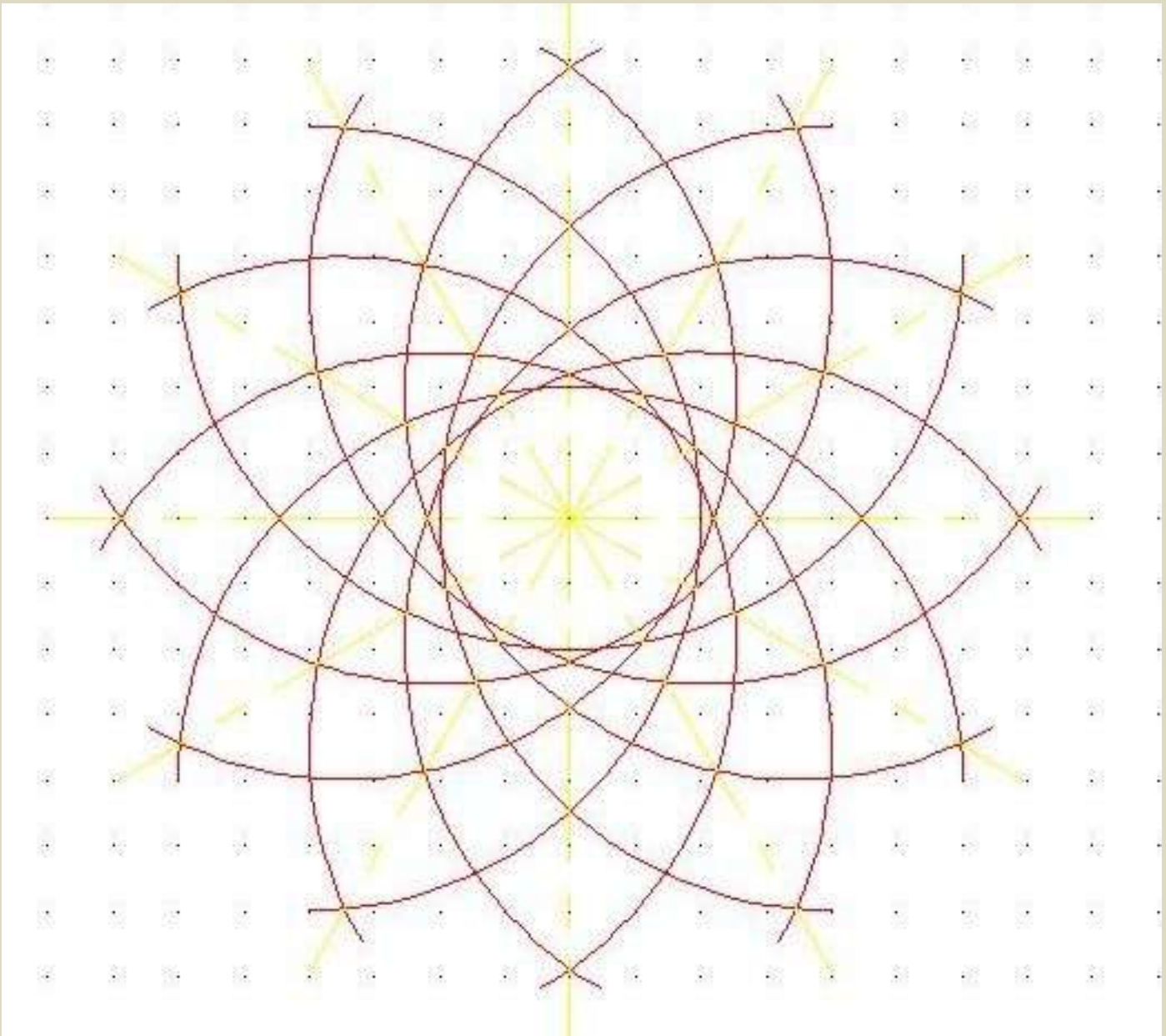
## Dimension Hatch



Prop



## Polar



## Backgammon Board

